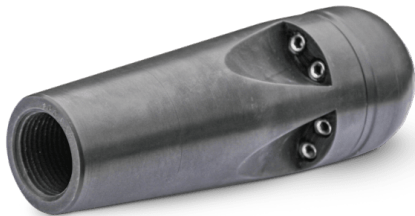


## Torpedo aluminium nozzles

<https://ehle-hd.com/en/product/torpedo-aluminium-nozzles/>



The **Torpedo aluminium nozzles** with their flat thrust jets and low weight achieve a very high tractive force. The nozzles are specifically used for cleaning long PVC pipes for landfill pipelines and rehabilitated sewer pipelines.




### Features

- Nozzle body made of lightweight aluminium
- High tractive force due to flat jet angle
- use in landfills and long sewer pipes
- Suitable for recycled water (ceramic inserts)
- optionally available with penetration mandrel (steel tip)

### Nozzle inserts:

- The nozzles are fitted as standard with all-ceramic or ceramic-in-VA nozzle inserts. Other nozzle inserts are available on request.
- In order to optimally match the nozzle to the flushing unit, we require the pump capacity (litres per minute), the working pressure (bar) as well as the length, diameter and material of the high-pressure hose.

## Attributes

Image	SKU	Productname	Attributes	LxWxH & Weight
	80-9890-0000	1/2" Torpedo - T050	<b>connection:</b> 1/2" female thread <b>application from:</b> 80 - 200 mm <b>thrust nozzles:</b> 6x M6 <b>thrust jet angle:</b> 15°	119 × 40 × 40 mm 0.24
	80-9990-0000	3/4" Torpedo - T075	<b>connection:</b> 3/4" female thread <b>application from:</b> from 100 mm <b>thrust nozzles:</b> 8x M6 <b>thrust jet angle:</b> 15°	175 × 60 × 60 mm 0.70
	80-9999-0000	1" Torpedo - T100	<b>connection:</b> 1" female thread <b>application from:</b> from 100 mm <b>thrust nozzles:</b> 8x M6 <b>thrust jet angle:</b> 15°	175 × 60 × 60 mm 0.70