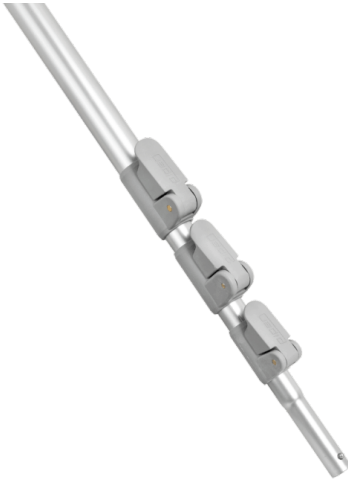


telescopic poles

<https://ehle-hd.com/en/product/telescopic-poles/>



The **telescopic poles** for safe working up to a depth of 6 m for shafts and containers, thus eliminating the need for access. With its large number of mountable tools, the telescopic rod is an indispensable shaft aid.



Our extremely sturdy telescopic poles with the reliable Power-Grip locking technology are torsion- and insertion-proof for perfect guidance of the tools.

Short version pushed together only 1300 mm long for space-saving transport!

Features

- High-quality workmanship and very stable
- Material Aluminium
- Power-Grip locking technology for fast and safe telescoping
- extendable up to 6 m
- Tool holder Ø 20 mm with locking tube pin spring
- non-slip rubber handle

Attributes

Image	SKU	Productname	Attributes	LxWxH & Weight
	2004317	Telescopic pole short version	type: telescopable length: extendable up to 3,5 m	1300 × 40 × 60 mm 1.50
	2004316	Telescopic pole long version	type: telescopable length: extendable up to 6.0 m	1800 × 40 × 60 mm 2.00