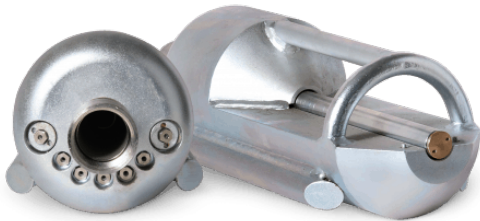


Super-Bully bottom cleaner

<https://ehle-hd.com/en/product/super-bully-bottom-cleaner/>



Defines standards – for extremely heavy contamination!

The latest nozzle technology and findings from the field were applied when developing our heavy-clearing nozzles. The entire water jet energy produced concentrates on the sewer bottom to be cleaned. This results in a maximum efficiency combined with excellent traction and cleaning.


The low point of gravity, the skid guide and an edgeless design prevent a turn-over and ensure the unlimited sliding properties of the clearing nozzle, both in forward and backward movement.

We supply heavy Super-Bully bottom cleaners including ceramics nozzle inserts.

Features

- for removal of heavy deposits, e.g. debris or sludge, in sewers of DN 400 and above
- larger sewer and tube lengths possible
- **suitable for vans with a water reclaiming system**

Attributes

Image	SKU	Productname	Attributes	LxWxH & Weight
	1100314	1 1/4" Super-Bully SB05	connection: 1 1/4" female thread application from: from 400 mm water supply: from 340 lpm thrust nozzles: 7x M10 thrust jet angle: 1x 5° / 4x 15° / 2x 26° front nozzles: 1x M10 front jet angle: (-)	400 × 150 × 150 mm 31.0