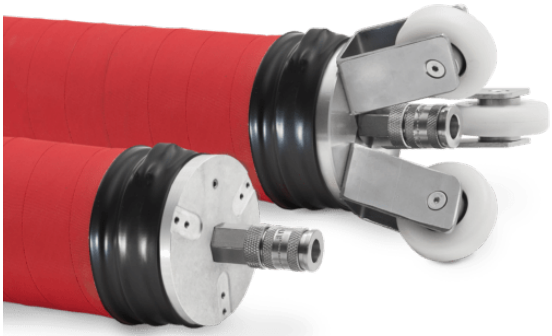


Flexible packer 150-250

<https://ehle-hd.com/en/product/pointed-flexible-packer-150-250-kopie/>










The **Flex-Packer DN 150 - 250 mm** with optional wheel system - this way, it is really easy to install short or long liners even over long distances. The red, special extensible hose made of a soft rubber ensures very smooth contact surfaces and optimum transitions to the liner.

Available up to 10 m in length - special sizes on request.

Features

- light cast aluminium couplings
- optional snap on/off wheels for easy positioning of the packer
- raw dimension Ø 100 mm
- red, highly extensible hose (extension max. threefold outer diameter) with friction-resistant external sheet (smooth wrap, chequered fabric)
- Temperature range between -25°C and +60°C
- **max. 1.5 bar (36.2 psi) operation pressure**

Attributes

Image	SKU	Productname	Attributes	LxWxH & Weight
	2002180_A	Flexible Packer 150-250 / 0.8 m	length: 800 mm contact length: approx 650 - 550 mm operating pressure: 1.5 bar (21.8 psi)	800 × 100 × 100 mm 3.00
	2002181_A	Flexible Packer 150-250 / 1.0 m	length: 1,000 mm contact length: approx 850 - 750 mm operating pressure: 1.5 bar (21.8 psi)	1000 × 100 × 100 mm 3.30
	2002182_A	Flexible Packer 150-250 / 1.2 m	length: 1,200 mm contact length: approx 1,050 - 900 mm operating pressure: 1.5 bar (21.8 psi)	1200 × 100 × 100 mm 3.70
	2002183_A	Flexible Packer 150-250 / 1.5 m	length: 1,500 mm contact length: approx 1,350 - 1,200 mm operating pressure: 1.5 bar (21.8 psi)	1500 × 100 × 100 mm 4.20
	2002185_A	Flexible Packer 150-250 / 2.0 m	length: 2,000 mm contact length: approx 1,850 - 1,700 mm operating pressure: 1.5 bar (21.8 psi)	2000 × 100 × 100 mm 5.00
	2002188_A	Flexible Packer 150-250 / 2.5 m	length: 2,500 mm contact length: approx 2,350 - 2,250 mm operating pressure: 1.5 bar (21.8 psi)	2500 × 100 × 100 mm 6.00
	2002189_A	Flexible Packer 150-250 / 3.0 m	length: 3,000 mm contact length: approx 2,850 - 2,700 mm operating pressure: 1.5 bar (21.8 psi)	3000 × 100 × 100 mm 6.70



2002190_A

Flexible Packer 150-250 / 4.0 m

length: 4,000 mm
contact length: approx 3,850 -
3,750 mm
operating pressure: 1.5 bar (21.8
psi)

4000 × 100 × 100
mm
8,50



2003114

snap on/off wheels - typ 1-4

150 × 100 × 100 mm
1.20