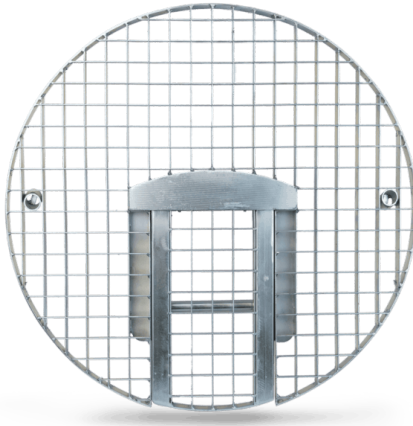


# manhole safety gates - all in one

<https://ehle-hd.com/en/product/manhole-safety-gates-all-in-one/>



The **4 in 1 Allround manhole safety gate** offers you 4 functions in one device.

- Closed as ventilation manhole gate
- open as working manhole gate
- with hose guide for HD flushing work and TV inspections
- or with multi-part satellite cable guide for TV inspections or robot control cables

## Features

- magnetic closure of the working opening
- working opening 175 x 330 mm
- incl. 2 signal flags
- Load capacity 2,5 tons

### optional:

- for small manholes a 3-point fixation is available, it holds the grille in place

### Accident prevention regulations: UVV § 17.6:

Every open manhole access, even those that are not being worked on, must be secured against falls by persons. A suitable protective measure against falling in is, for example, a rust protected against shifting.

## Attributes

Image	SKU	Productname	Attributes	LxWxH & Weight
	1130079	manhole safety cover - allround-650	<b>diameter:</b> 650 mm	650 × 650 × 65 mm 10.3
	1130074	manhole safety cover - allround 800	<b>diameter:</b> 800 mm	800 × 800 × 65 mm 12.9
	1130088	3-point fixation for small shafts	<b>type:</b> accessories	110 × 100 × 40 mm 0.10