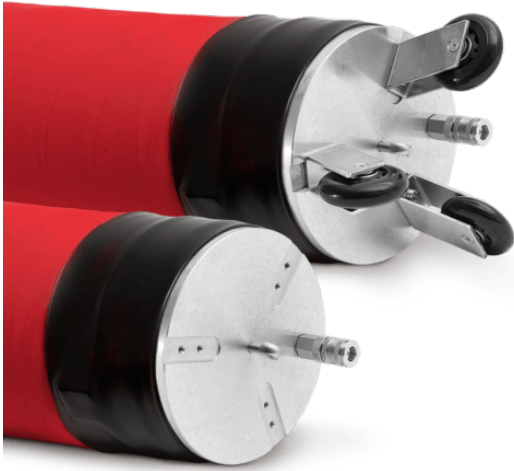


## Flexible packer 250-400

<https://ehle-hd.com/en/product/flexible-packer-250-400/>










The **Flex-Packer DN 250-400 mm** was developed especially for sewer rehabilitation. The red, special extensible hose made of a soft rubber ensures very smooth contact surfaces and optimum transitions to the liner. As an option, we offer a carriage to facilitate the installation of short or long liners over long distances.

**Available up to 10 m in length - special sizes on request.**

### Features

- light cast aluminium couplings
- optional snap on/off wheels for easy positioning of the packer
- raw dimension  $\varnothing$  205 mm
- red, highly extensible hose (extension max. threefold outer diameter) with friction-resistant external sheet (smooth wrap, chequered fabric)
- Temperature range between  $-25^{\circ}\text{C}$  and  $+60^{\circ}\text{C}$
- **max. 1.5 bar (36.2 psi) operation pressure**

## Attributes

Image	SKU	Productname	Attributes	LxWxH & Weight
	2002260	Flexible Packer 250-400 / 1.0 m	<b>length:</b> 1,000 mm <b>contact length:</b> approx 700 - 550 mm <b>operating pressure:</b> 1.5 bar ( 21.8 psi)	1000 x 205 x 205 mm 11.0
	2002262	Flexible Packer 250-400 / 1.2 m	<b>length:</b> 1,200 mm <b>contact length:</b> approx 950 - 850 mm <b>operating pressure:</b> 1.5 bar ( 21.8 psi)	1200 x 205 x 205 mm 12.2
	2002264	Flexible Packer 250-400 / 1.5 m	<b>length:</b> 1,500 mm <b>contact length:</b> approx 1,200 - 1,100 mm <b>operating pressure:</b> 1.5 bar ( 21.8 psi)	1500 x 205 x 205 mm 14.2
	2002266	Flexible Packer 250-400 / 2.0 m	<b>length:</b> 2,000 mm <b>contact length:</b> approx 1,700 - 1,600 mm <b>operating pressure:</b> 1.5 bar ( 21.8 psi)	2000 x 205 x 205 mm 17.2
	2002268	Flexible Packer 250-400 / 2.5 m	<b>length:</b> 2,500 mm <b>contact length:</b> approx 2,200 - 2,100 mm <b>operating pressure:</b> 1.5 bar ( 21.8 psi)	2500 x 205 x 205 mm 20.5
	2002270	Flexible Packer 250-400 / 3.0 m	<b>length:</b> 3,000 mm <b>contact length:</b> approx 2,700 - 2,600 mm <b>operating pressure:</b> 1.5 bar ( 21.8 psi)	3000 x 205 x 205 mm 23.8
	2002272	Flexible Packer 250-400 / 4.0 m	<b>length:</b> 4,000 mm <b>contact length:</b> approx 3,700 - 3,600 mm <b>operating pressure:</b> 1.5 bar ( 21.8 psi)	4000 x 205 x 205 mm 30.2

2003114

snap on/off wheels - typ 1-4

150 × 100 × 100 mm  
1.20

