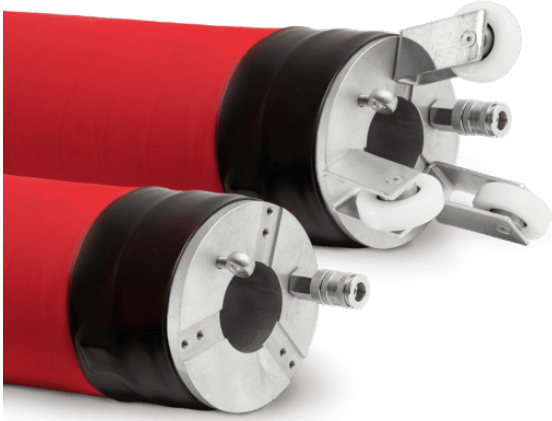


Bypass Flex-Packer 200-300

<https://ehle-hd.com/en/product/bypass-flex-packer-200-300/>










The **Flex-Packer DN 200 - 300 mm with bypass** enables the repair of pipe segments even in pipes with high water flow. No need for bypassing or pumps. The red, special extensible hose made of a soft rubber ensures very smooth contact surfaces and optimum transitions to the liner.

Available up to 10 m in length - special sizes on request.

Features

- light cast aluminium couplings with flexible passage Ø 60 mm
- optional snap on/off wheels for easy positioning of the packer
- raw dimension Ø 150 mm
- red, highly extensible hose (extension max. threefold outer diameter) with friction-resistant external sheet (smooth wrap, chequered fabric)
- Temperature range between -25°C and +60°C
- **max. 1.5 bar (36.2 psi) operation pressure**

Attributes

Image	SKU	Productname	Attributes	LxWxH & Weight
	2002240	Bypass Flex-Packer 200-300 / 0.8 m	length: 800 mm contact length: approx 650 - 550 mm bypass: 60 mm operating pressure: 1.5 bar (21.8 psi)	800 × 150 × 150 mm 7.50
	2002241	Bypass Flex-Packer 200-300 / 1.0 m	length: 1,000 mm contact length: approx 850 - 750 mm bypass: 60 mm operating pressure: 1.5 bar (21.8 psi)	1000 × 150 × 150 mm 8.40
	2002242	Bypass Flex-Packer 200-300 / 1.2 m	length: 1,200 mm contact length: approx 1,050 - 900 mm bypass: 60 mm operating pressure: 1.5 bar (21.8 psi)	1200 × 150 × 150 mm 9.10
	2002244	Bypass Flex-Packer / 1.5 m	length: 1,500 mm contact length: approx 1,250 - 1,150 mm bypass: 60 mm operating pressure: 1.5 bar (21.8 psi)	1500 × 150 × 150 mm 10.5
	2002246	Bypass Flex-Packer 200-300 / 2.0 m	length: 2,000 mm contact length: ca. 1,750 - 1,650 mm bypass: 60 mm operating pressure: 1.5 bar (21.8 psi)	2000 × 150 × 150 mm 12.8
	2002248	Bypass Flex-Packer 200-300 / 2.5 m	length: 2,500 mm contact length: ca. 2,250 - 2,150 mm bypass: 60 mm operating pressure: 1.5 bar (21.8 psi)	2500 × 150 × 150 mm 15.2
	2002250	Bypass Flex-Packer 200-300 / 3.0 m	length: 3,000 mm contact length: ca. 2,750 - 2,650 mm bypass: 60 mm operating pressure: 1.5 bar (21.8 psi)	3000 × 150 × 150 mm 17.8



2002252

Bypass Flex-Packer 200-300 / 4.0
m

length: 4,000 mm
contact length: ca. 3,750 - 3,650
mm
bypass: 60 mm
operating pressure: 1.5 bar (21.8
psi)

4000 × 150 × 150 mm
22.5



2003114

snap on/off wheels - typ 1-4

150 × 100 × 100 mm
1.20