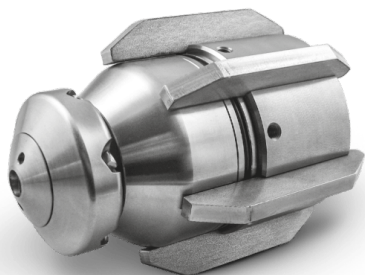


Blue 80 rotary sewer nozzle

<https://ehle-hd.com/en/product/blue-80-spinning-nozzle/>



The **Blue 80 rotary sewer nozzle** - is a nozzle that solves almost all problems. It removes grease deposits, incrustations, heavy mineral deposits, blockages and roots. It cleans larger diameters faster, with less water compared to conventional nozzles.

It can be operated with fresh or recycled water and has a smooth, electromagnetic speed control. This means that the speed of rotation can be adjusted to the pipe diameter and the required needs.

With the front jet can the nozzle also be used to remove blockages.

Features

- Use from 100 mm to 300 mm
- for removing grease deposits, incrustations, heavy mineral deposits, clogging and rooting.
- from 75 litres per minute up to 200 bar applicable
- Suitable for any water quality - fresh or recycled water, also print converters
- Controlled speed by means of an eddy current magnetic brake, which functions like a torque regulator. The brake causes no noise, is frictionless and wear free for the entire service life.
- The Blue 80 has four high-precision, lifetime lubricated bearings for extremely high loads and rough handling.
- No oil, no brake lining, no bushes No maintenance required!





Nozzle inserts:

- In order to optimally match the nozzle to the flushing unit, we need the power of the pump (litres per minute), the working pressure (bar) and the length, diameter and material of the HP hose.

Scope of delivery:

- Blue 80 spinning unit with speed adjustment
- Cleaning head
- incl. ceramic inserts M6

Attributes

Image	SKU	Productname	Attributes	LxWxH & Weight
	80-8585-0000	3/4" Blue 80 - boxed	connection: 3/4" female thread application from: 100 - 300 mm water supply: 75 - 250 lpm thrust nozzles: 3x M6 spinning nozzles: 3x M6	125 × 86 × 86 mm 2.0
	80-8585-0000F	3/4" Blue 80 with front jet - boxed	connection: 3/4" female thread application from: 100 - 300 mm water supply: 75 - 250 lpm thrust nozzles: 3x M6 spinning nozzles: 3x M6 front nozzles: 1x M6	125 × 86 × 86 mm 2.0
	80-8580-0000	1" Blue 80 - boxed	connection: 1" female thread application from: 100 - 300 mm water supply: 190 - 400 lpm thrust nozzles: 6x M6 spinning nozzles: 3x M6	125 × 86 × 86 mm 2.0
	80-8580-0000F	1" Blue 80 with front jet - boxed	connection: 1" female thread application from: 100 - 300 mm water supply: 190 - 400 lpm thrust nozzles: 6x M6 spinning nozzles: 3x M6 front nozzles: 1x M6	125 × 86 × 86 mm 2.0