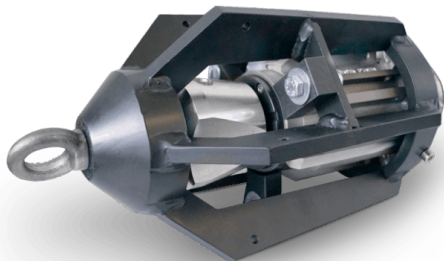


## Blue 100 vibro nozzle

<https://ehle-hd.com/en/product/blue-100-vibro-nozzle/>



The **Blue 100 vibrating nozzle** - is used to remove hard mineral deposits e.g. exposed aggregate concrete etc. on the bottom of the sewer. The rotating head produces vibrations, which are transmitted into the material by the runners. Thereby the solid material breaks up into clods and can be transported away with the push nozzles.

It can be operated with fresh or recycled water and has a smooth, electromagnetic speed control.

### Features

- Use from 250 mm
- Suitable for any water quality - fresh or recycled water, also for pressure converters
- Controlled speed by means of an eddy current magnetic brake, which functions like a torque regulator. The brake causes no noise, is frictionless and wear-free for the entire service life.
- The Blue100 has four high-precision, lifetime-lubricated bearings for extremely high loads and rough handling.
- No oil, no brake lining, no bushings - No maintenance required!
- Exchangeable push plates - so the nozzle can be quickly used on several vehicles
- modular design - allows easy adjustment to diameter, application and mode of operation
- Use even at low pressure - 60 to 100 bar are sufficient for quick and thorough cleaning. Thus fuel costs can be reduced.

### Nozzle inserts:

- In order to optimally match the nozzle to the flushing unit, we need the power of the pump (litres per minute), the working pressure (bar) and the length, diameter and material of the HP hose.

### Scope of delivery:

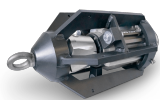
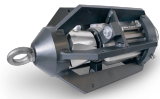
- Blue 100 spinning unit with speed adjustment
- Thrust plate

page 1



- Vibro housing
- Vibro Head
- Vibro ball bearing
- Vibro clamping ring
- Vibro clamping wedge with screw
- runner plastic 110mm with speed regulation
- Towing eye
- incl. ceramic inserts M 10x1

## Attributes

Image	SKU	Productname	Attributes	LxWxH & Weight
	80-8000-V000	1" Blue 100 -Vibro nozzle	<b>connection:</b> 1" female thread <b>application from:</b> from 300 mm <b>water supply:</b> 50 - 210 gpm <b>thrust nozzles:</b> 5x M10 <60gpm 6x M10 >60gpm <b>spinning nozzles:</b> 3x M10	350 × 190 × 190 mm 11.8
	80-8025-V000	1 1/4" Blue 100 -Vibro nozzle	<b>connection:</b> 1 1/4" female thread <b>application from:</b> from 300 mm <b>water supply:</b> 50 - 210 gpm <b>thrust nozzles:</b> 5x M10 <60gpm 6x M10 >60gpm <b>spinning nozzles:</b> 3x M10	350 × 190 × 190 mm 11.8