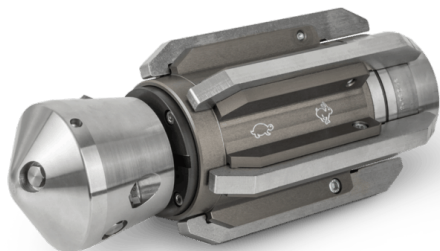


## Blue 100 rotary sewer nozzle

<https://ehle-hd.com/en/product/blue-100-spinning-nozzle/>



The **Blue 100 Transformer** - a tool for a variety of applications. The modular design of the rotary sewer nozzle allows work in diameters from 150 mm to 400 mm (for large profiles up to 2.400 mm depending on the design optional accessories required).

It can be operated with fresh or recycled water and has a smooth, electromagnetic speed control. This allows the rotational speed to be adjusted to the respective pipe diameter and the required requirements.

With the optional pre-jet, the nozzle can also be used to remove blockages.

### Features

- Use from 150 mm to 400 mm (max. 2,500 mm with optional accessories)
- Suitable for any water quality - fresh or recycled water, also for pressure converters
- Controlled speed by means of an eddy current magnetic brake, which functions like a torque regulator. The brake causes no noise, is frictionless and wear-free for the entire service life.
- The Blue100 has four high-precision, lifetime-lubricated bearings for extremely high loads and rough handling.
- No oil, no brake lining, no bushings - No maintenance required!
- Exchangeable push plates - so the nozzle can be quickly used on several vehicles
- modular design - allows easy adjustment to diameter, application and mode of operation
- Use even at low pressure - 60 to 100 bar are sufficient for quick and thorough cleaning. Thus fuel costs can be reduced.





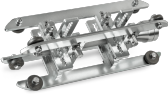


### Nozzle inserts:

- In order to optimally match the nozzle to the high pressure jetting unit, we need the power of the pump (litres per minute), the working pressure (bar) and the length, diameter and material of the HP hose.

## Scope of delivery:

- Blue100 turning unit with speed adjustment
- Cleaning head
- Thrust plate per connection and water capacity
- Steel runners 110 mm, set of 6 pcs.
- Steel runners 150 mm, set 6 pcs.
- Allen key
- Toolbox
- incl. ceramic inserts M10x1

## Attributes

Image	SKU	Productname	Attributes	LxWxH & Weight
	80-8075-1025	3/4" Blue 100 - boxed	<b>connection:</b> 3/4" female thread <b>application from:</b> 150 - 400 mm <b>water supply:</b> 50 - 210 gpm <b>thrust nozzles:</b> 5x M10 <60gpm <b>spinning nozzles:</b> 3x M10 / optional up to 5x <b>front nozzles:</b> 1x M10 <b>front jet angle:</b> 15°	340 × 280 × 170 mm 9.70
	80-8000-1025	1" Blue 100 - boxed	<b>connection:</b> 1" female thread <b>application from:</b> 150 - 400 mm <b>water supply:</b> 50 - 210 gpm <b>thrust nozzles:</b> 5x M10 <60gpm 6x M10 >60gpm <b>spinning nozzles:</b> 3x M10 / optional up to 5x <b>front nozzles:</b> 1x M10 <b>front jet angle:</b> 15°	340 × 280 × 170 mm 9.70
	80-8025-1025	1 1/4" Blue 100 - boxed	<b>connection:</b> 1 1/4" female thread <b>application from:</b> 150 - 400 mm <b>water supply:</b> 50 - 210 gpm <b>thrust nozzles:</b> 5x M10 <60gpm 6x M10 >60gpm <b>spinning nozzles:</b> 3x M10 / optional up to 5x <b>front nozzles:</b> 1x M10 <b>front jet angle:</b> 15°	340 × 280 × 170 mm 9.70
	80-8000-2031	Blue 100 - tank cleaning head	<b>type:</b> accessories	50 × 60 × 60 mm 1.0
	80-3514-0500	Blue 100 - Centring 250-500	<b>application from:</b> 250 mm (10") - 500 mm (20")	600 × 240 × 240 mm 18.0
	80-3514-0700	Blue 100 - Centring 350-700	<b>application from:</b> 350 mm (14") - 700 mm (28")	600 × 290 × 290 mm 22.0
	80-3514-1200	Blue 100 - Centring 700-1200	<b>application from:</b> 700 - 1,200 mm	600 × 690 × 690 mm 40.0



80-3514-2400

Blue 100 - Centring 1200-2400

**application from:** 1200 - 2400 mm

1600 × 2400 × 2400  
mm  
50.0



80-3514-TH01

Blue 100 - thrust unit for centering  
2400

**application from:** 1200 - 2400 mm  
**type:** accessories

800 × 300 × 300 mm  
15.0